

# Safety GS Lifting Sub

The Omega Safety GS Lifting Sub was designed to overcome the weaknesses and more importantly the safety risks commonly associated when transporting wireline intervention equipment that utilize an internal latching profile such as Wireline Retrievable Insert Safety Valves.

Commonly external slings or clamps have been used to aid personnel from carrying out potentially hazardous manual handling of awkward and heavy equipment. In some instances these devices cannot be used, such as when clamping externally may cause damage to the valve/tool.

In addition having external fixings carries a risk of damage to be inflicted to the connections/bolts/clamps etc, utilizing an internal latching profile lifting device eliminates these risks.

Installation of the Omega Safety GS Lifting Sub is achieved by lowering the device into the fishing neck with the Outer Sleeve screwed back and the Locking Dogs retracted, once in position the Outer Sleeve is then threaded downwards to allow the Locking Dogs to fully engage the internal latching profile.

At this point a Locking Pin is fitted through the tool to prevent the Outer Sleeve from rotating free during transportation.

## Features

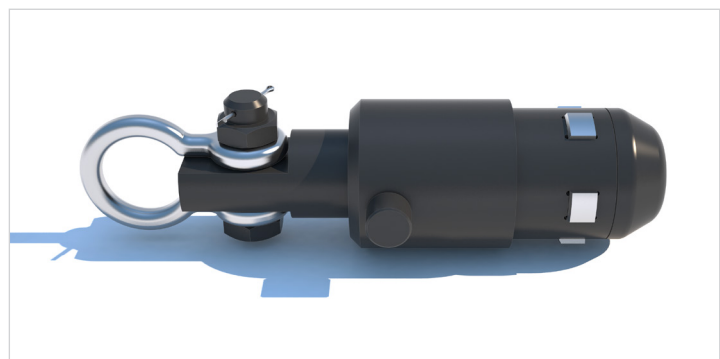
- Locking Dogs utilized to secure tool during transportation.
- Threaded Outer Sleeve allows for manual adjustment.
- Locking Pin prevents tool back-off.

## Applications

- Wireline Retrievable Insert Sub Surface Safety Valves.
- Flow Control Locks/Plugs.
- Tubing Hanger Locks/Plugs.
- Retrievable Bridge Plugs.
- Straddles.
- Hold Open/Protection Sleeves.

## Benefits

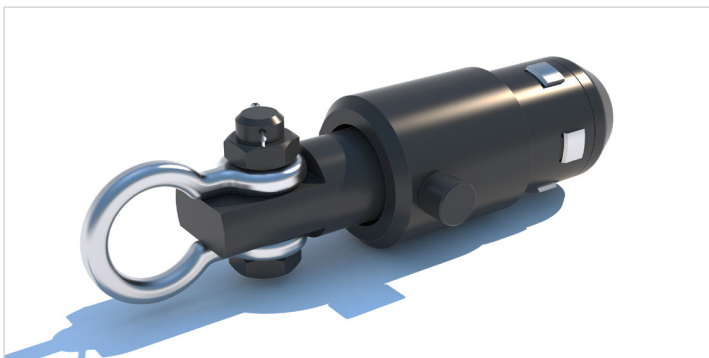
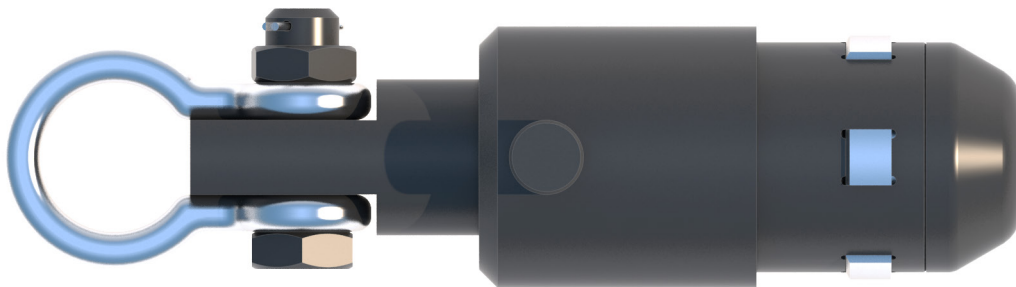
- Provides a Safe and Controlled lift.
- Minimizes manual handling of equipment.
- Easy installation and removal.
- Once installed, tool is Locked/Pinned in position.



# Technical Specifications

Tool Size	4" GS	5" GS	6" GS
Material	AISI 4140 (30-36 Rc)	AISI 4140 (30-36 Rc)	AISI 4140 (30-36 Rc)
Coating	QPQ	QPQ	QPQ
MAX OD	3.525"	4.500"	5.480"
S.W.L.	1 Ton	1 Ton	1 Ton

Other sizes and ratings are available upon request.



ACCESSORIES

Omega Well Intervention Ltd  
 Omega House  
 Kirkhill Road  
 Kirkhill Industrial Estate  
 Dyce  
 Aberdeen  
 AB21 0GQ

Tel: +44 (0)1224 772744  
 Fax: +44 (0)1224 775667

Email: [info@omega-intervention.com](mailto:info@omega-intervention.com)  
<http://www.omega-intervention.com>