

Drop Bar

The Releasable Rope Socket (RRS) roller Drop Bar is utilized to activate the release trigger of the (RRS) and allow recovery of the wireline, drop bar and the upper section of the RRS from the wellbore.

The drop bar is available to suit all wire sizes and can be fitted with rollers based on tubing size and any restrictions in the wellbore. The roller drop bar is utilized where deviation affects the use of a standard drop bar.

Features

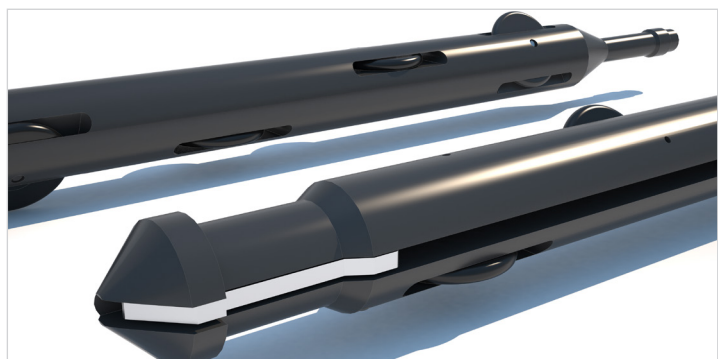
Extensive range of roller sizes available.

Applications

Activation of Releasable Rope Socket.

Benefits

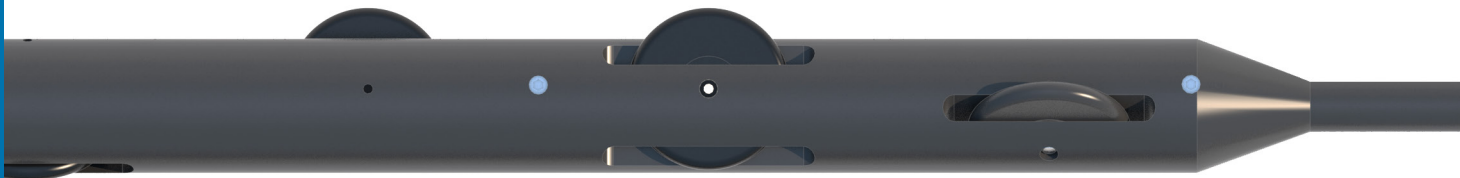
Suitable for all standard slickline and braided wire sizes.



Technical Specifications

Item	Max OD	Fish Neck Size.	Length	Wheel OD**
1	1-1/2"	1.375"	3ft	N/A
2	1-1/2"	1.375"	3ft	1.800"
3	1-1/2"	1.375"	5ft	N/A
4	1-1/2"	1.375"	5ft	1.800"
5	1-7/8"	1.750"	3ft	N/A
6	1-7/8"	1.750"	3ft	2.400"
7	1-7/8"	1.750"	5ft	N/A
8	1-7/8"	1.750"	5ft	2.400"

** Wheel OD should be specified at time of order



INTERVENTION

Omega Well Intervention Ltd
 Omega House
 Kirkhill Road
 Kirkhill Industrial Estate
 Dyce
 Aberdeen
 AB21 0GQ
 Tel: +44 (0)1224 772744
 Fax: +44 (0)1224 775667
 Email: info@omega-intervention.com
<http://www.omega-intervention.com>